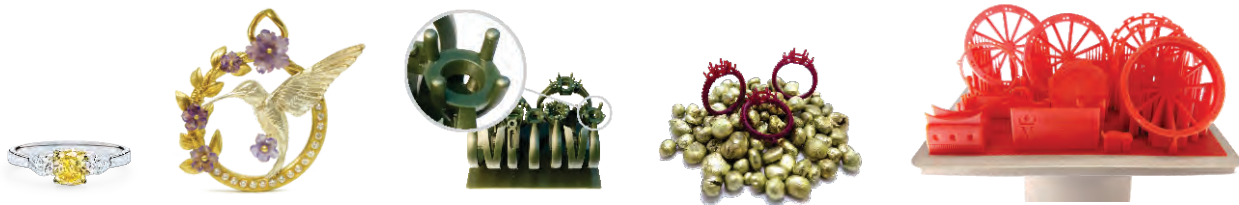


***ASIGA***®

3D Printers for Jewelry Manufacturing

Repeatable precision for quality assurance and productivity.



Being the creators of the precision desktop 3D printer market, we continue to offer precision, surface finish and product innovations designed to outperform any other.

OUR KEY FEATURES
What makes us different



Our key features.
The innovations that make us different.



Wifi Enabled
connect wirelessly

High Impact Hood
UV blocking with excellent clarity

Single Point Calibration
calibrate in under 30 seconds

Auto Power-Off
energy saving mode

Quick Release
fast material change-over

Composer Software
intuitive user interface included

Open Material System
use any suitable 3rd party material

Environmental Control
reliable performance with every print

SPS Technology
active layer control for consistent output

Lifetime Technical Support
free and unlimited

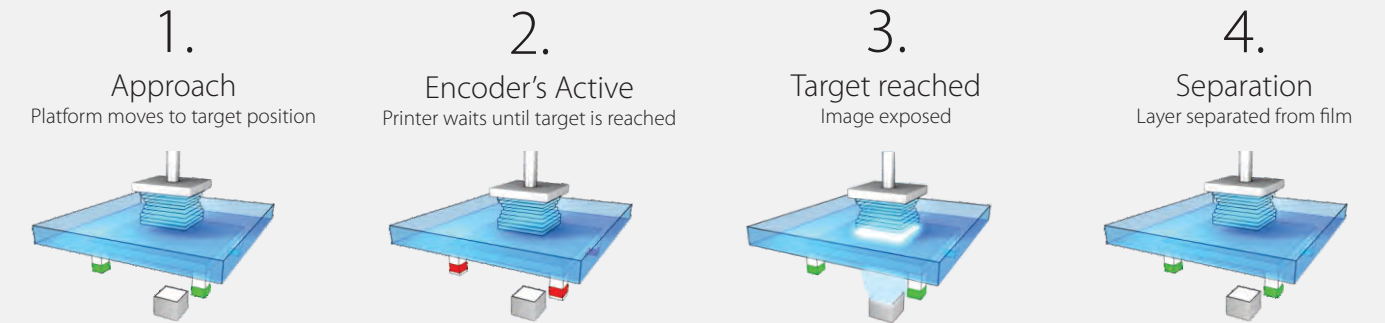
Touch Screen Display
for greater user convenience

High Power UV LED
for long term reliability

Internal Radiometer
automatic LED power calibration

Our Smart Positioning System (SPS) Technology.

All MAX systems incorporate Asiga's proven SPS Technology sensor array that guarantees every model layer is formed precisely in minimal time.



The result is precision, speed and reliability that your business can depend on.

MAX LCD



Optimized LCD 3D printing technology.
The MAX LCD takes advantage of Asiga's proven SPS technology and repeatable print precision to offer an affordable production ready 3D printer. The MAX LCD provides an efficient and intuitive user experience via our fully integrated Composer software and simple touch screen display.



Printer Performance

Print capacity	up to 55 rings (size dependant)
Print speed - 25µm layers	9 hrs (height of tallest piece 30mm)
Print cost (USD)	\$0.50 - \$2 per piece (weight/material dependant)



Printer Specification

Build size X,Y,Z	121 x 68 x 76mm* (4.76 x 2.7 x 3 inches)
Pixel size X,Y	47µm
Z resolution	Variable in 1µm increments
Light source	405nm LED
Material system	Open material system
File inputs	STL, SLC, STM
Software	Asiga Composer (included)
Network compatibility	Wifi, Wireless direct, Ethernet
Industry sectors	Jewelry manufacturing
System size	260 x 380 x 370mm (10.2 x 15 x 14.5 inches)
System weight	16.5Kg (packaged 19Kg)
Packaged size/weight	410 x 500 x 480mm (18.1 x 22 x 19.7 inches)
Power	100-240VAC, 50/60Hz, 2.0A MAX

* build envelope size may vary

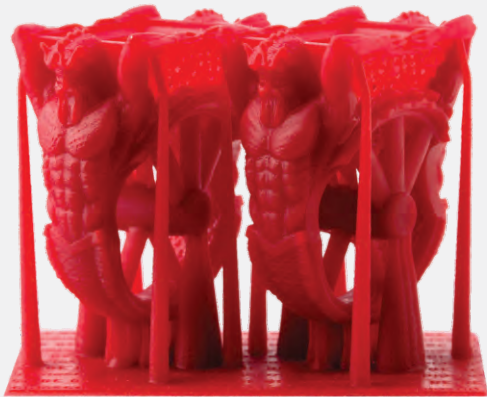


MAX Mini



Accurate, reliable, affordable.

MAXMini delivers Asiga's latest SPS technology in an economical format ideal for jewelry studios. Perfect for rapid production of jewelry casting patterns, rubber mold masters and visualization models.



Printer Performance

Print capacity	up to 15 rings (size dependant)
Print speed - 25µm layers	3.5 hrs (height of tallest piece 30mm)
Print cost (USD)	\$0.50 - \$2 per piece (weight/material dependant)



Printer Specification

Build size X,Y,Z	51.2 x 32 x 76mm* (2 x 1.26 x 3 inches)
Pixel size X,Y	39µm
Z resolution	Variable in 1µm increments
Light source	High-power 405nm LED
Material system	Open material system
File inputs	STL, SLC, STM
Software	Asiga Composer (included)
Network compatibility	Wifi, Wireless direct, Ethernet
Industry sectors	Jewelry manufacturing
System size	260 x 380 x 370mm (10.2 x 15 x 14.5 inches)
System weight	16.5Kg (packaged 19Kg)
Packaged size/weight	410 x 500 x 480mm (18.1 x 22 x 19.7 inches)
Power	100-240VAC, 50/60Hz, 2.0A MAX

* build envelope size may vary



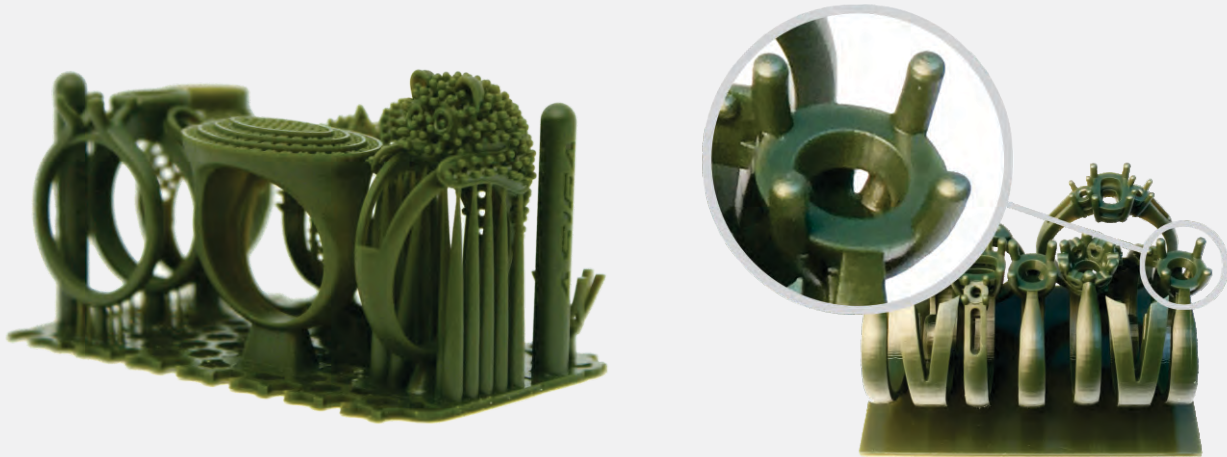


**MAX
X**



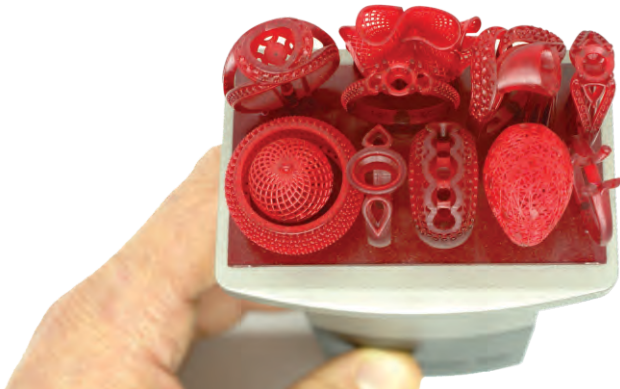
Flexible precision.

Flexible precision. The MAX X is Asiga's highest resolution jewelry production system with a re-configurable resolution of 27, 35 or 43 microns. This allows the system to be adapted to both extreme resolution and high productivity applications. Built on the extraordinary precision of Asiga's SPS Technology, the MAX X delivers performance, reliability and flexibility for jewelers and casting houses.



Printer Performance

Print capacity	up to 40 rings (ring size dependant)
Print speed - 25µm layers	3.5 hrs (height of tallest piece 30mm)
Print cost (USD)	\$0.50 - \$2 per piece (weight/material dependant)



Printer Specification

MAX X27 Build size X, Y, Z	51.8 x 29.1 x 76mm* (2 x 1.14 x 3 inches)
MAX X35 Build size X, Y, Z	67.2 x 38 x 76mm* (2.6 x 1.5 x 3 inches)
MAX X43 Build size X, Y, Z	82.5 x 46.4 x 76mm* (3.24 x 1.82 x 3 inches)
Z resolution	Variable in 1µm increments
Light source	High-power 405nm LED
Material system	Open material system
File inputs	STL, SLC, STM
Software	Asiga Composer (included)
Network compatibility	Wifi, Wireless direct, Ethernet
Industry sectors	Jewelry manufacturing
System size	260 x 380 x 505mm (10.2 x 15 x 19.8 inches)
System weight	19kg (packaged 21.5Kg)
Packaged size/weight	940 x 530 x 500mm (37 x 20.8 x 19.7 inches)
Power	100-240VAC, 50/60Hz, 2.0A MAX



MAX

Volume production on your desktop.

The MAX offers Asiga's largest build envelope with the delicate precision required for the production of beautiful jewelry patterns. The larger print volume allows jewelers, artists and casting houses to produce sculptures, bangles, and large quantities of casting patterns in a single print.



Printer Performance

Print capacity	54+ rings (size dependant)
Print speed - 25µm layers	3.5 hrs (height of tallest piece 30mm)
Print cost (USD)	\$0.50 - \$2 per piece (weight/material dependant)



Printer Specification

Build size X,Y,Z	119 x 67 x 76mm* (4.68 x 2.63 x 3 inches)
Pixel size X,Y	62µm
Z resolution	Variable in 1µm increments
Light source	High-power 405nm LED
Material system	Open material system
File inputs	STL, SLC, STM
Software	Asiga Composer (included)
Network compatibility	Wifi, Wireless direct, Ethernet
Industry sectors	Jewelry manufacturing
System size	260 x 380 x 370mm (10.2 x 15 x 14.5 inches)
System weight	16.5Kg (packaged 19Kg)
Packaged size/weight	410 x 500 x 480mm (18.1 x 22 x 19.7 inches)
Power	100-240VAC, 50/60Hz, 2.0A MAX

* build envelope size may vary



Which Asiga MAX is for you?



MAXMini

11x rings
Build size: 51.2 x 32 x 76mm (2 x 1.26 x 3 inches)
10 micron build time: 8hrs
25 micron build time: 3.5hrs



MAX X27

9x rings
Build size: 51.8 x 29.1 x 76mm (2 x 1.14 x 3 inches)
10 micron build time: 8hrs
25 micron build time: 3.5hrs



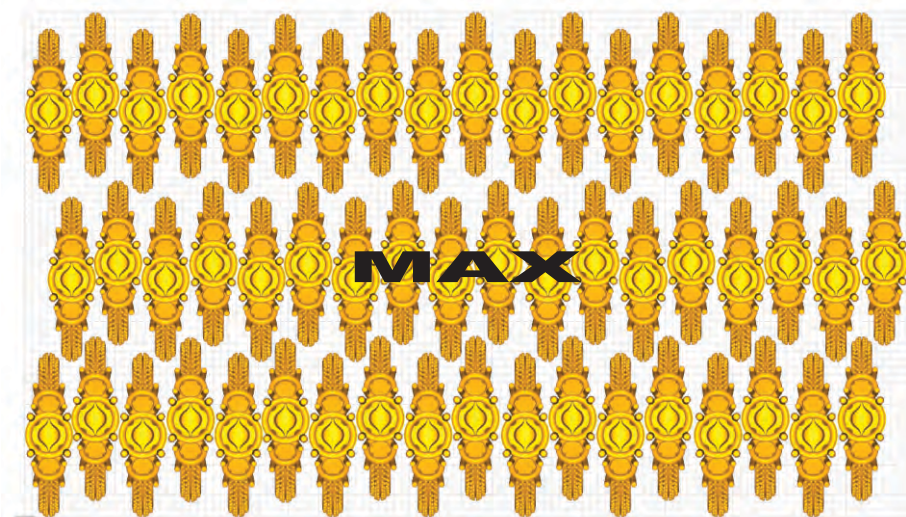
MAX X35

18x rings
Build size: 67.2 x 38 x 76mm (2.6 x 1.5 x 3 inches)
10 micron build time: 8hrs
25 micron build time: 3.5hrs



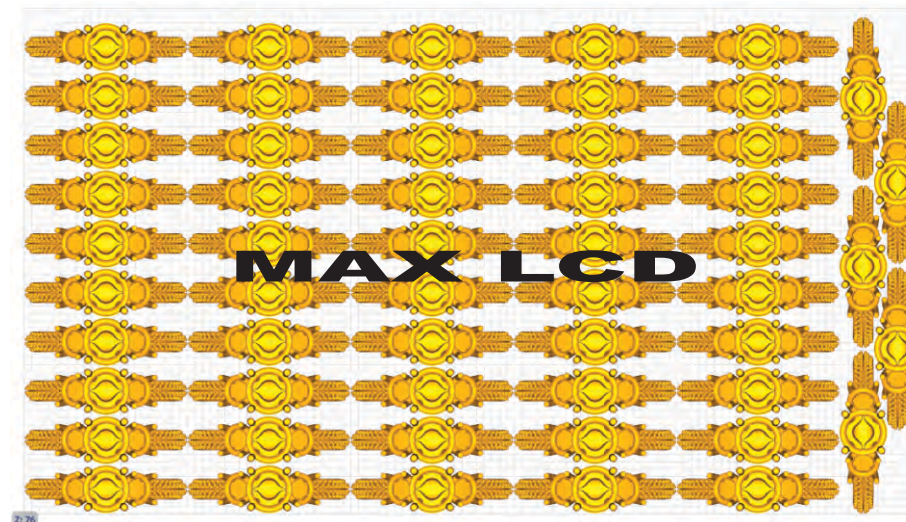
MAX X43

26x rings
Build size: 82.5 x 46.4 x 76mm (3.24 x 1.82 x 3 inches)
10 micron build time: 8hrs
25 micron build time: 3.5hrs



MAX

54x rings
Build size: 119 x 67 x 76mm* (4.68 x 2.63 x 3 inches)
10 micron build time: 8hrs
25 micron build time: 3.5hrs



MAX LCD

55x rings
Build size: 121 x 68 x 76mm* (4.76 x 2.7 x 3 inches)
10 micron build time: 16hrs
25 micron build time: 9hrs



3D printing materials for jewelry manufacturing,
from casting wax to rubber molding.

SuperCAST^{HD}

Direct Casting
Resin material
for Gold Alloys



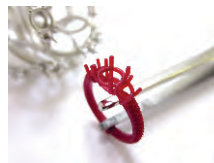
SuperWAX

Direct Casting
WAX material for
Platinum, Gold Alloys



SuperCAST

Direct Casting
Resin material
for Gold Alloys



FusionGRAY

Vulcanized
Rubber Molds
& RTV



SuperCAST LCD

Direct Casting
Resin material for Gold Alloys.
LCD printers only

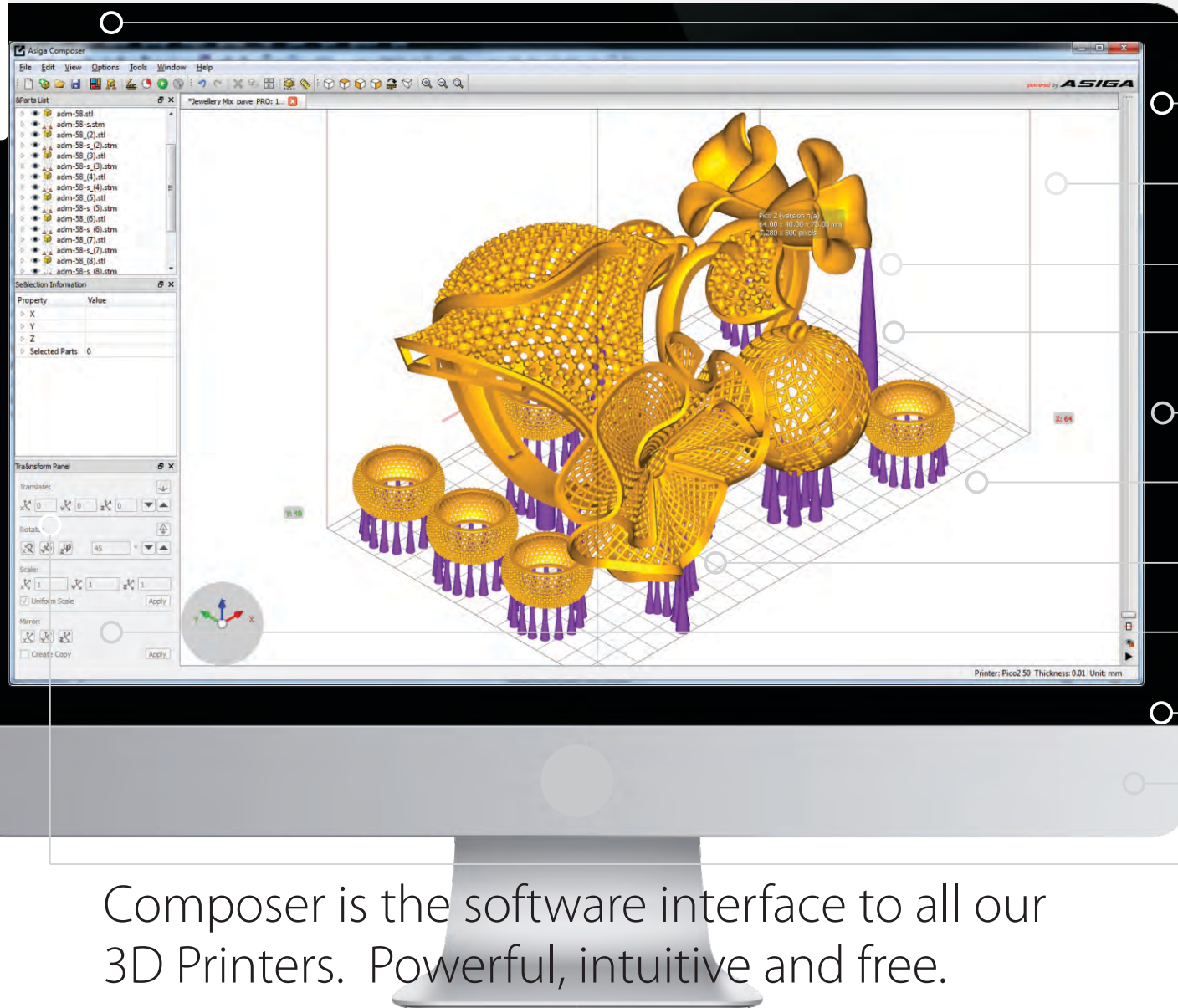


Our Open Material System allows for printing with any suitable
material from any material manufacturer.



Materials available in both 500ml & 1l bottle sizes





Auto-Supports
for greater user efficiency

Remote Control
login to your 3D printer remotely

Build Time Estimator
schedule workflow

STL / SLC or Both
load STL & SLC into the same build

Flexible Supports
avoid support collisions

Multi-Stacking
maximize Z height usage

Dynamic Array
maximize build area usage

Add Casting Sprue
streamline casting workflow

Load Multiple Builds
onboard PC to store multiple builds

Final Check
measurement tool

License Free
free updates, forever.

User Control
full user access to build settings

Composer is the software interface to all our
3D Printers. Powerful, intuitive and free.

Multi-Operating System
Apple, Windows & Linux



ASIGA

Free and unlimited lifetime technical support.
Local sales, service and support via our global
reseller network.

Affordable Digital Manufacturing, it's something Asiga invented.

In 2011, Asiga launched the world's first LED based DLP 3D printer and started the affordable desktop stereolithography revolution which changed digital manufacturing forever.

Asiga won the MJSA's 2012 Thinking Ahead award for best new technology and gained international recognition for innovative products which continue to lead their respective categories to this day.

Asiga designs and manufactures all products at it's headquarters in Sydney, Australia. Asiga's in-house mechanical, electrical, software and materials team ensures continued innovation and product improvement.

Contact us or one of our resellers to learn more.

Asiga Australia (HQ)
Factory 2, 19-21 Bourke Road
Alexandria, Sydney 2015
Australia
TEL: +61 2 9690 2737

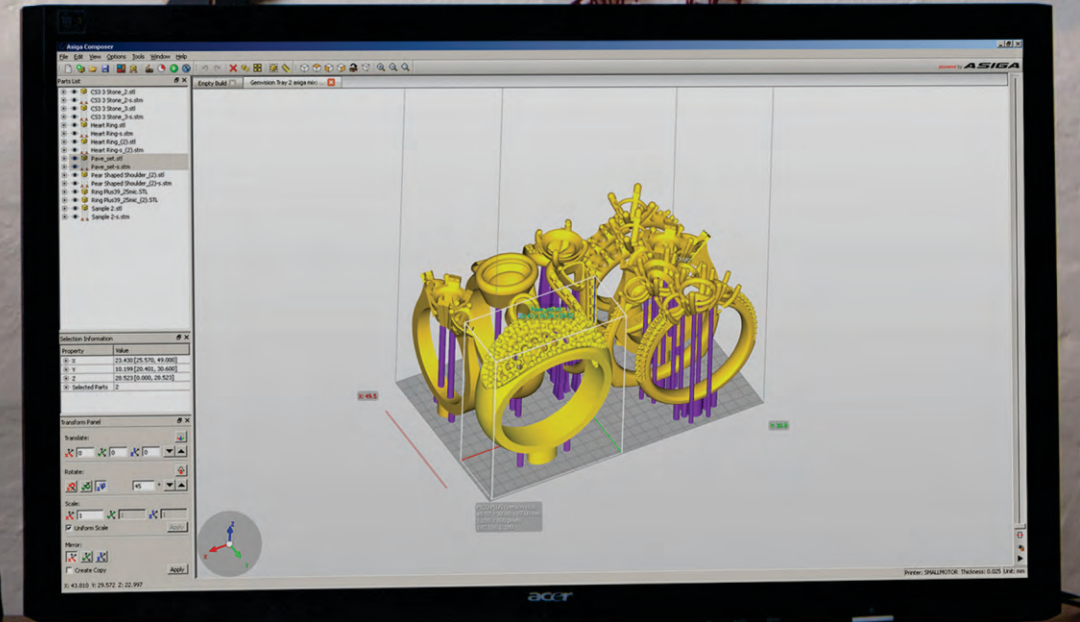
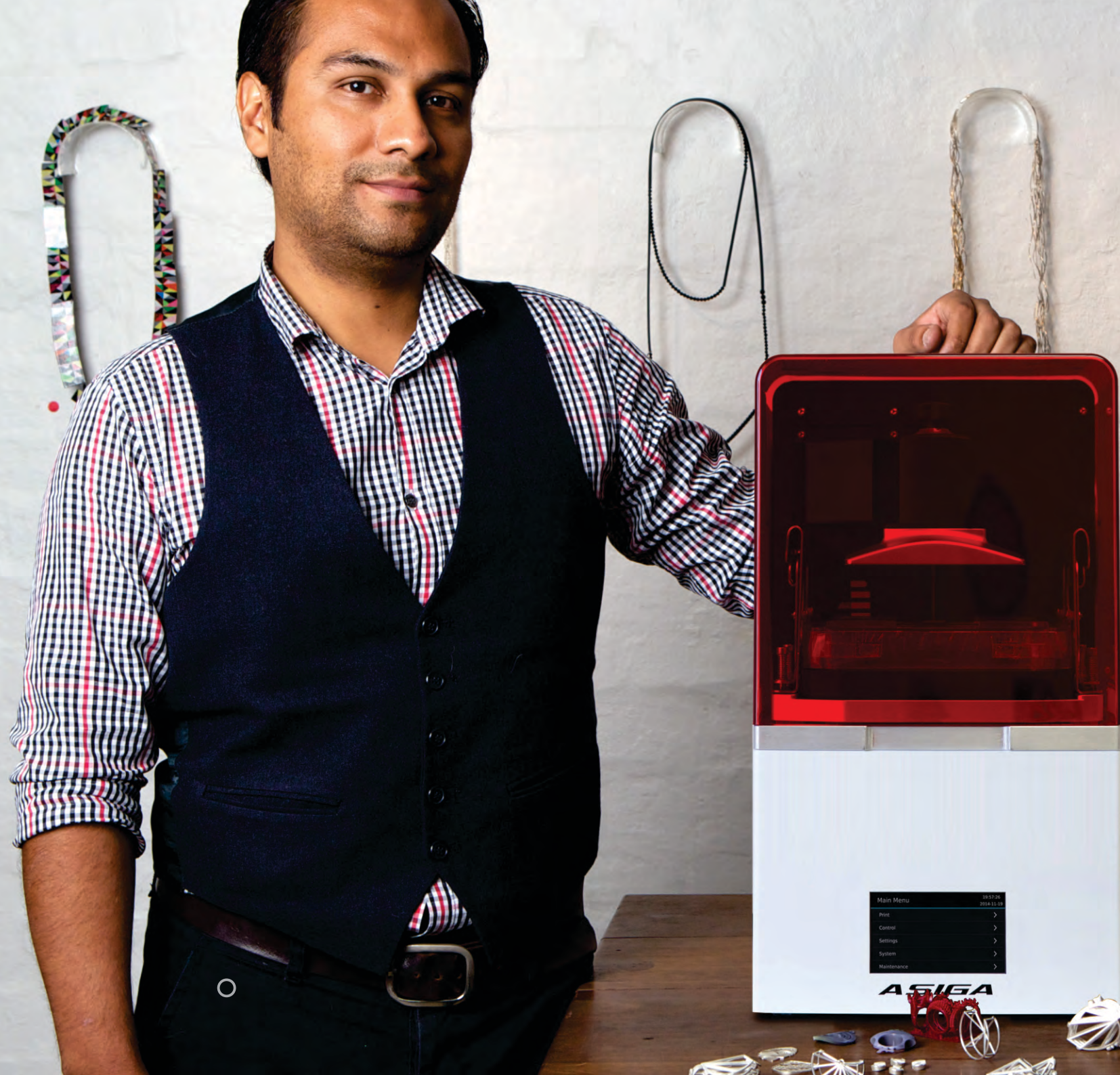
Asiga Germany
Kraempferstr. 4
99084, Erfurt
Germany
TEL: +49 361 5506 6866

Asiga USA
TOLL FREE: +1 877 689 99 98

info@asiga.com
www.asiga.com

FREEFORM







MAX LCD

MAX Mini

MAX X

MAX X27 Build size X, Y, Z
MAX X35 Build size X, Y, Z
MAX X43 Build size X, Y, Z

51.8 x 29.1 x 76mm* (2 x 1.14 x 3 inches)
67.2 x 38 x 76mm* (2.6 x 1.5 x 3 inches)
82.5 x 46.4 x 76mm* (3.24 x 1.82 x 3 inches)

Build Volume X, Y, Z	121 x 68 x 76mm / 4.75 x 2.7 x 3"	121 x 68 x 76mm / 4.75 x 2.7 x 3"	[27µm 121 x 68 x 76mm] or [35µm / 4.75 x 2.7 x 3"]
Pixel Resolution	47µm	39µm	Adjustable pixel size
Technology	LCD	LCD	LCD
LED Wavelength	405nm	405nm	405nm
System sizing	260 x 380 x 370mm /16.50Kg / 10.2 x 15 x 14.5" / 36.4Lbs	260 x 380 x 370mm /16.50Kg / 10.2 x 15 x 14.5" / 36.4Lbs	260 x 380 x 370mm /16.50Kg / 10.2 x 15 x 14.5" / 36.4Lbs
Packed sizing	410 x 500 x 480mm / 19Kg / 16.1 x 19.7 x 18.9" / 41.9Lbs	410 x 500 x 480mm / 19Kg / 16.1 x 19.7 x 18.9" / 41.9Lbs	410 x 500 x 480mm / 19Kg / 16.1 x 19.7 x 18.9" / 41.9Lbs
Asiga jewellery materials	SuperCAST-LCD (direct casting gold, silver)	SuperWAX v2(direct casting platinum, gold, silver) SuperCAST HD (direct casting gold, silver) SuperCAST v3 (direct casting gold, silver) FusionGRAY v2 (Vulcanize / RTV moulds) PlasGRAY v2 (Design validation)	
Material Compatibility	Open Material System to include materials from Bluecast, Stuller, Envisiontec, B9, Powercast and more.		
Software	Asiga Composer software. Lifetime updates included		
File inputs	STL, SLC, STM (Asiga Stomp file format)		
Network Compatibility	Wifi, WirelessDirect, Ethernet		
Power requirements	100-240VAC, 50/60Hz, 2.0A MAX		
Warranty	12 months manufacturers warranty		
Technical support	Unlimited lifetime technical support included		
Bundle includes	3D printer, Composer software, 1L Asiga material, 1L build tray, Asiga Flash post-curing chamber, calibration toolkit		

* Contact Asiga for information regarding material biocompatibility certification in your region